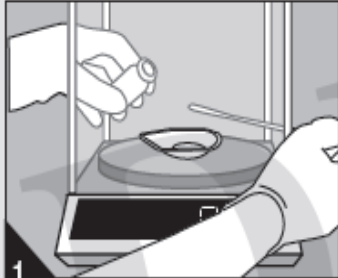


3M™ Petrifilm™ Salmonella Express Plate

沙門氏菌快速檢驗測試片操作說明

操作步驟一 --- 增殖

Media Supplement



1 Aseptically weigh the appropriate amount of 3M *Salmonella* Enrichment Supplement.

Enrichment Procedure



2 Aseptically add the 3M *Salmonella* Enrichment Supplement to the appropriate amount of autoclaved, prepared 3M *Salmonella* Enrichment Base.



3 Prepare dilution of food product. Weigh or pipette food product into a sterile container such as a homogenizer bag or container.



4 Add appropriate quantity of the combined 3M *Salmonella* Enrichment Base plus 3M *Salmonella* Enrichment Supplement to the sample bag or container.

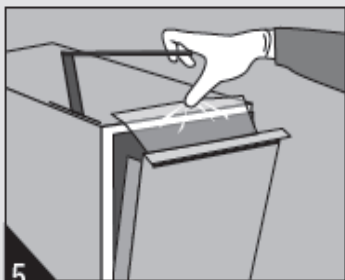
用電子天秤秤取適量的沙門氏菌增殖液添加物。

將沙門氏菌增殖液添加物加入適量滅菌過的沙門氏菌增殖液。

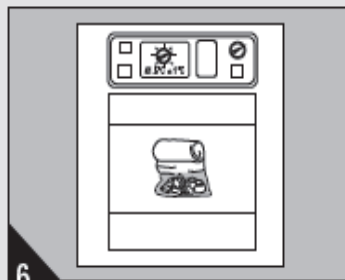
取 25g 檢體放入無菌增殖袋或培養瓶。

加入 225ml 溶有沙門氏菌增殖液添加物的沙門氏菌增殖液。

Enrichment Procedure cont.



5 Blend or homogenize sample per current procedure.



6 Incubate the enriched samples at $41.5 \pm 1^\circ\text{C}$ for 18–24 hours. For low microbial background samples, move to step 9.



7 For high microbial background samples only. After enrichment incubation, transfer 0.1mL into 10mL R-VR10.



8 Incubate the R-VR10 at $41.5 \pm 1^\circ\text{C}$ for 8–24 hours.

均質。

放入 42°C 培養 18~24 小時。

高背景值的樣品，可能需要第二次增殖。取 0.1ml 的第一次增殖液加入 10ml 的 R-VR10。

放入 42°C 培養 8~24 小時。

操作步驟二 --- 接種、培養與判讀

Plate Inoculation, Incubation and Interpretation



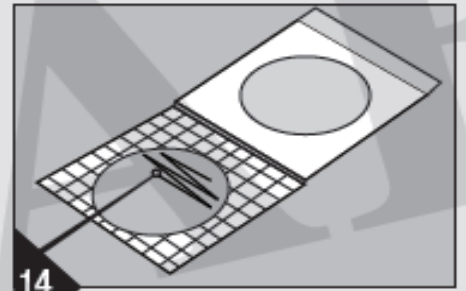
13a

For low microbial background samples, use a sterile 10µL loop to withdraw a full loop of sample. Use a smooth loop (one that does not have jagged edges and is not distorted) to prevent the gel surface from breaking.



13b

For high microbial background samples, use a sterile 10µL loop to withdraw a full loop of sample for streaking the plate.



14

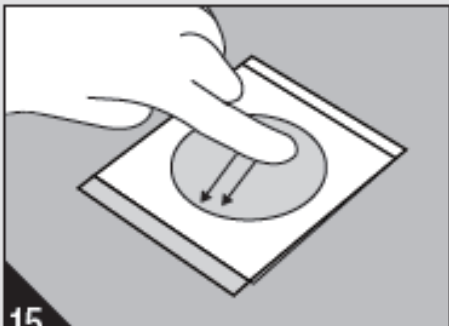
Perform a single streak, top of plate to bottom of plate, to obtain isolated colonies.

以 10ul 勾菌環沾取增殖菌液。

放入 42°C 培養 18~24 小時。

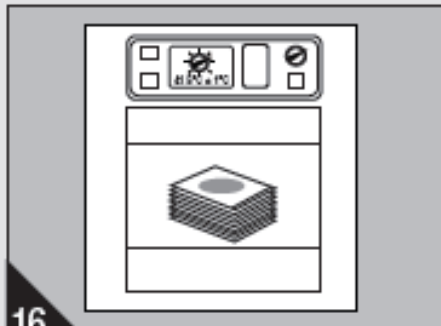
打開事先以 2ml 無菌水水化過的沙門氏菌快檢片，劃線於培養區域。

Plate Inoculation, Incubation and Interpretation cont.



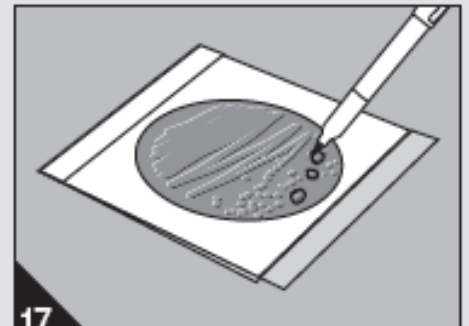
15

Roll down the top film to close the 3M Petrifilm SALX Plate. Using a gloved hand (while practicing good laboratory practices to avoid cross contamination and/or direct contact with the plate), gently apply a sweeping motion with even pressure onto the top film to remove any air bubbles in the inoculation area.



16

Incubate plates at $41.5^{\circ}\pm 1^{\circ}\text{C}$ for 24 ± 2 hours in a horizontal position with the colored side up in stacks of no more than 20 plates.



17

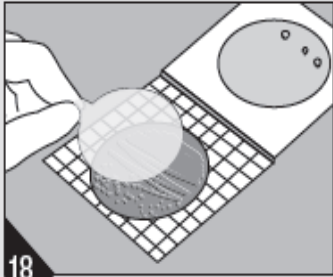
On the 3M Petrifilm SALX Plate top film, circle isolated presumptive positive *Salmonella* colonies using a permanent, ultra fine tip marker. Biochemically confirm all *Salmonella* presumptive positive results using the 3M Petrifilm SALX Confirmation Disk.

蓋上後以手指輕壓使其貼合。

放入 42°C 培養 24 小時。
*單次堆疊以 20 片為限。

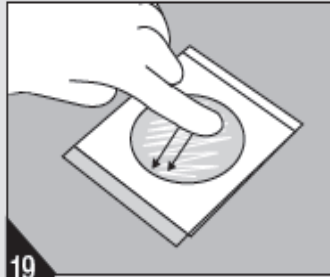
圈選疑似的單一菌落。

Biochemical Confirmation



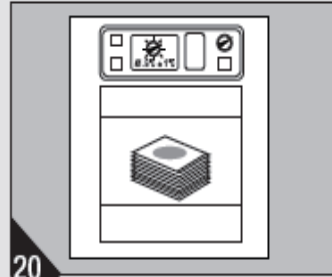
18

Remove an individually packaged 3M Petrifilm SALX Confirmation Disk from its pouch and allow it to come to room temperature. Peel the package to expose the disk's tab, grasp the tab, and remove the disk. Lift the top film (with the already circled presumptive *Salmonella* colonies) of the 3M Petrifilm SALX Plate and insert the disk by rolling it onto the gel to avoid entrapping air bubbles. Close the plate.



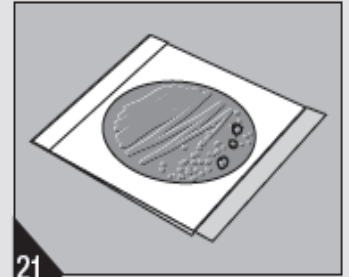
19

Using a gloved hand, gently apply a sweeping motion with even pressure onto the top film to remove any air bubbles in the inoculation area and assure good contact between the gel and the 3M Petrifilm SALX Confirmation Disk.



20

Incubate the 3M Petrifilm *Salmonella* Express System (plate and disk) at $41.5 \pm 1^\circ\text{C}$ for 4–5 hours.



21

Remove the 3M Petrifilm *Salmonella* Express System from the incubator and proceed with reading the results. Look only at the circled colonies.

打開沙門氏菌快檢片，壓上確認片。

蓋上後以手指輕輕壓使其貼合。

放入 42°C 培養 4~5 小時。

判讀圈選的菌落是否變色。

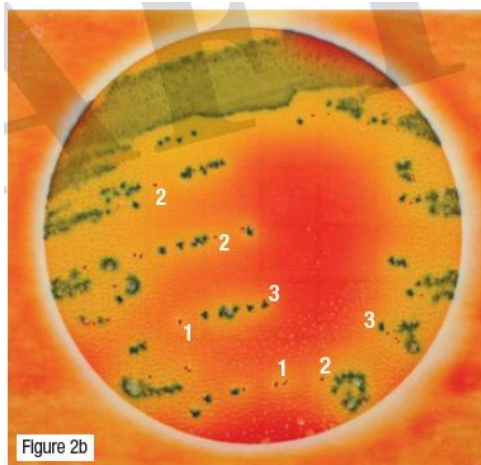


Figure 2b

3M Petrifilm SALX Plate with mixed colony morphologies

Observation: (1) Isolated red colonies with yellow zone and associated gas bubble. (2) Isolated red colonies with yellow zone only. (3) Background flora of blue, blue-green colonies.

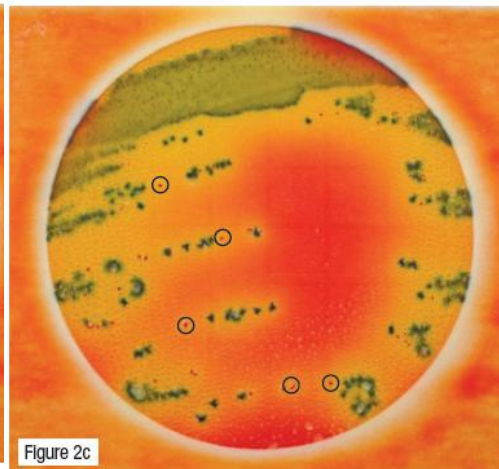


Figure 2c

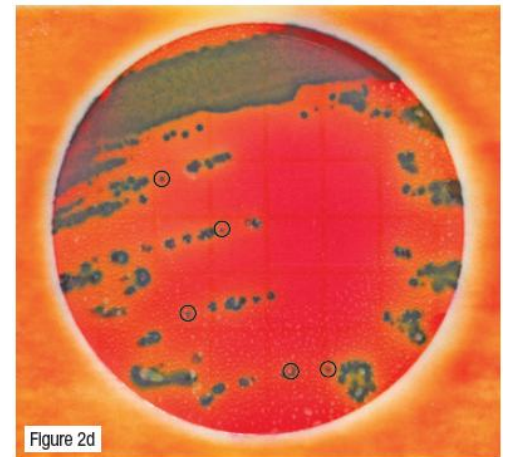


Figure 2d

3M Petrifilm SALX Plate with 3M Petrifilm SALX Confirmation Disk

Observation: Circled presumptive positive colonies are blue to dark blue/black with blue precipitate after the addition and incubation of the 3M Petrifilm SALX Confirmation Disk. These circled colonies are biochemically confirmed positive for *Salmonella* species.

混合菌落（未加確認片）

1. 單一紅色菌落底色變黃伴隨氣泡（疑似陽性）

2. 單一紅色菌落底色變黃（疑似陽性）

3. 背景為藍色或藍綠色的菌落（陰性）

圈選疑似陽性菌落後，置入確認片，放入 42°C 培養 4~5 小時。

觀察圈選的菌落是否變成深藍色或黑色帶有藍色沈澱。